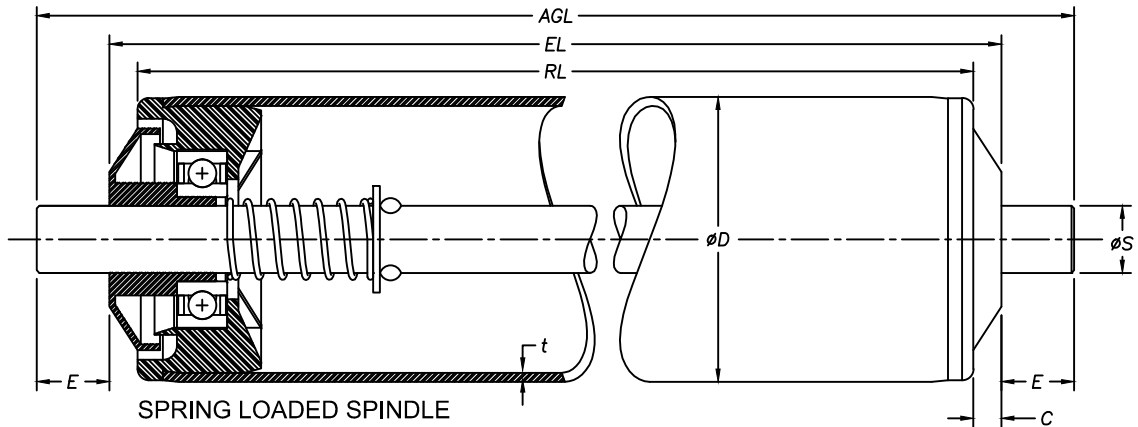




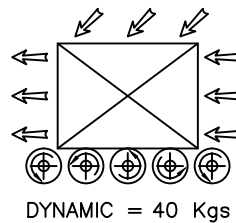
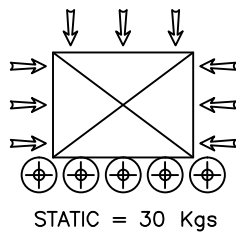
PLASTIC END CAP ROLLER



EL = RL+10mm
AGL = EL+24mm

*ACTUAL PIPE Ø50 = 50.80mm
*ACTUAL PIPE Ø60 = 60.15mm

LOAD CAPACITY :



TUBE QUALITY	Diameter (ØD)	Roller Length (RL)	C	E	ØS	t
M/S ZINC PLATED	Ø50	100mm - 1200mm	5	12	12	1.6
STAINLESS STEEL	Ø50	100mm - 1200mm	5	12	12	1.6
M/S ZINC PLATED	Ø60	100mm - 1200mm	5	12	12	2.0
M/S ZINC PLATED	Ø60	100mm - 1200mm	5	12	12	2.9
M/S ZINC PLATED	Ø50	100mm - 1200mm	5	12	14	1.6
M/S ZINC PLATED	Ø60	100mm - 1200mm	5	12	14	2.0
M/S ZINC PLATED	Ø60	100mm - 1200mm	5	12	14	2.9